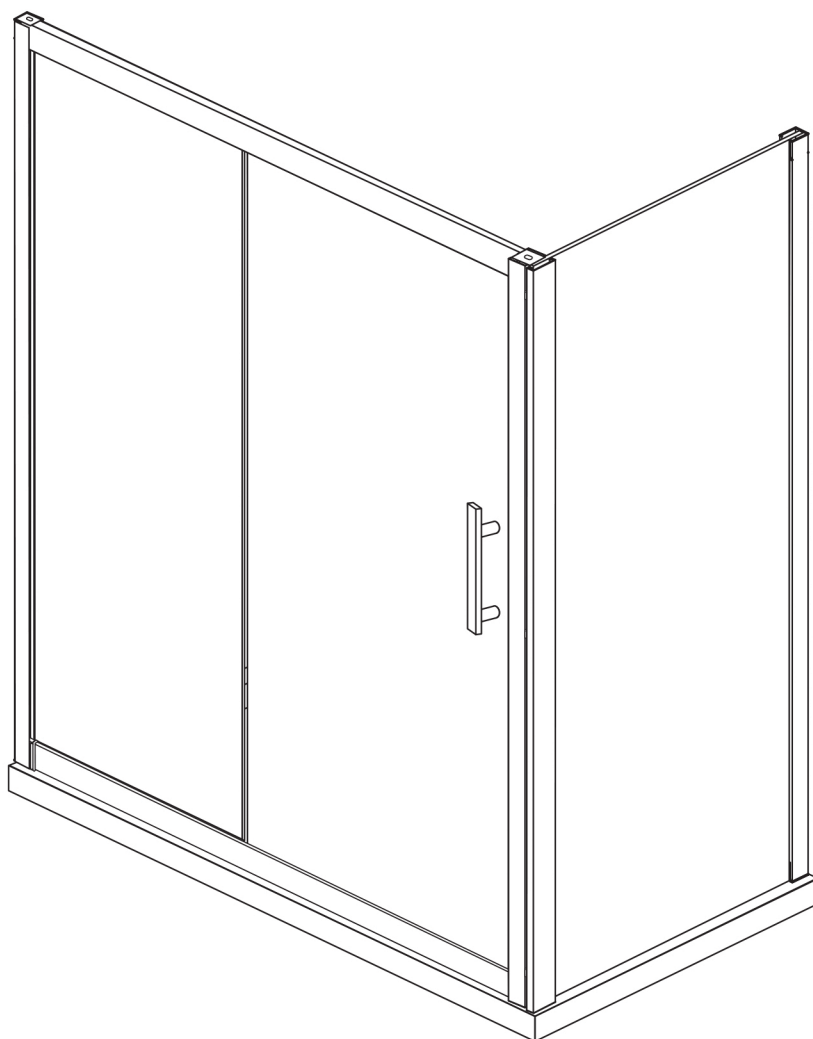


INSTALLATION INSTRUCTIONS

NPE6310



KARAG

INOX 400
+ SIDE Panel

◆ General Information

Please inspect the product immediately upon receipt for transit damage, missing packs/parts or manufacturing fault. Damage reported later cannot be accepted. Please handle the product with care avoiding knocks and shock loading to all sides and edges of the glass.

Notes: Safety glass can not be re-worked.

Please read these instructions carefully before start of installation.

Special care should be taken when drilling walls to avoid hidden pipes or electrical cables.

Note: This product is heavy and may require two people to install.

Aftercare instructions

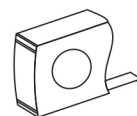
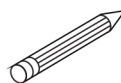
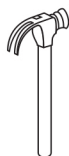
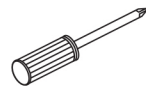
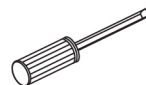
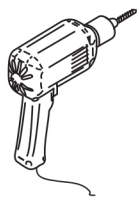
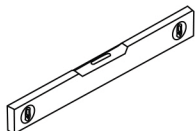
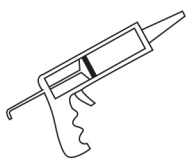
After use, your shower should be cleaned with soap and water. This is particularly important in hard water districts where insoluble lime salts may be deposited and allowed to build up.

Cleaners of a gritty or abrasive nature should not be used. Care should be taken to avoid contact with strong chemicals such as organic solvents and strippers.

Glass cleaners can be used but with caution, if in doubt contact the manufacturer of the cleaner in question.

Please keep these instructions for aftercare and customer service details.


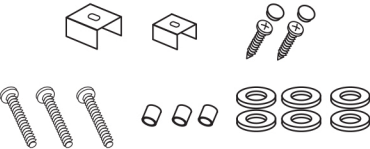
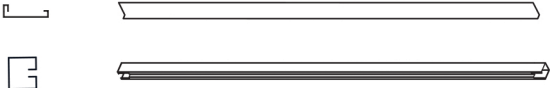

Tools Required



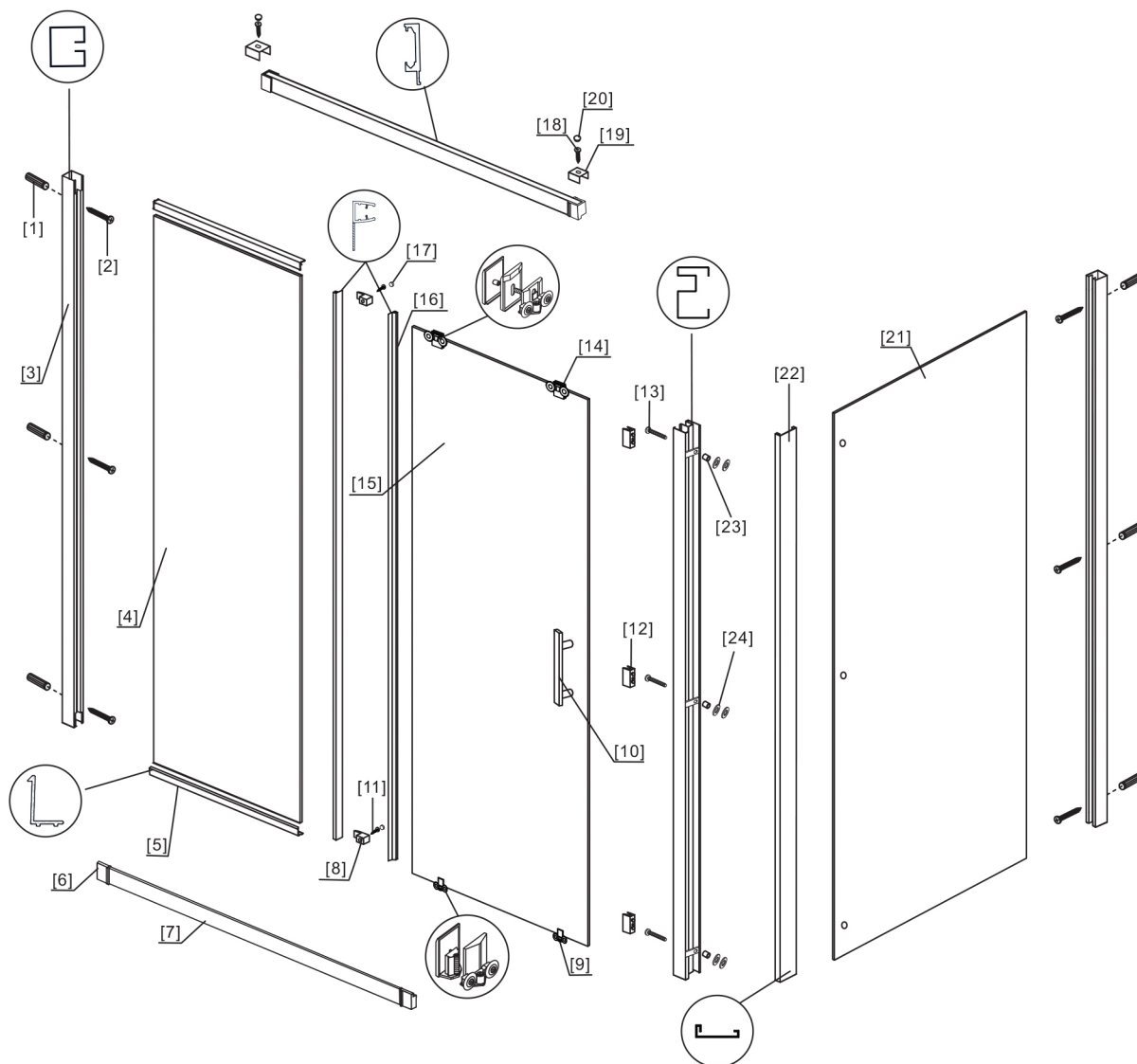
This product is heavy and may require two people to install.



◆ Box Contents:

[1] 1xInstallation Instruction.	➔	
[2] 2xProfile Covers. 2xScrews M4x8. 2xScrew Cover Caps. 3xScrews M5x22. 3xRetainers. 6xWashers.	➔	
[3] 1xCorner Post. 1xWall Posts.	➔	
[4] 1xFixed Panels.	➔	

◆ Assembly Drawing

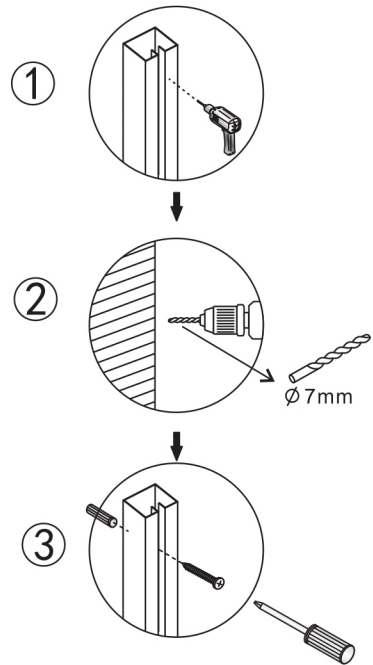
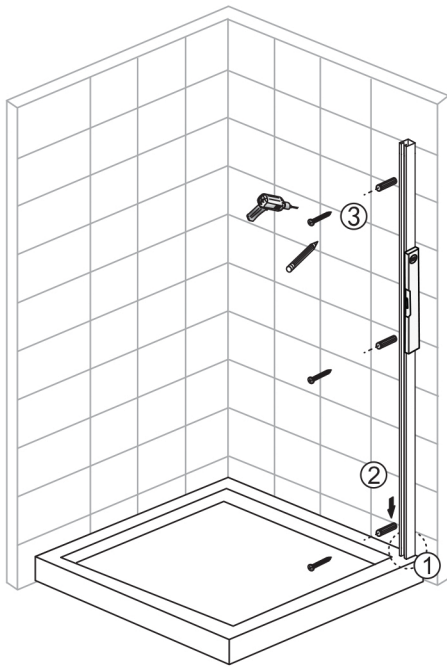


- [1] 6xWall Plugs
- [2] 6xFlat Screws ST4x35
- [3] 3xWall Posts
- [4] 1xFixed panel
- [5] 2xDeflectors
- [6] 4xProfile Covers
- [7] 2x Horizontal Rails
- [8] 2xBumper Blocks
- [9] 2xBottom Rolls
- [10] 1xHandle Set
- [11] 2xScrews St4x8
- [12] 3xBumper Blocks
- [13] 3xScrews M5x22

- [14] 2xTop Rolls
- [15] 2xScrew Cover Caps
- [16] 2xWater Deflectors
- [17] 2xCover Caps
- [18] 4xScrews ST4x8
- [19] 2xProfile Covers
- [20] 2xScrew Cover Caps
- [21] 1xFixed panel
- [22] 1xCorner Post
- [23] 3xRetainers
- [24] 6xWashers

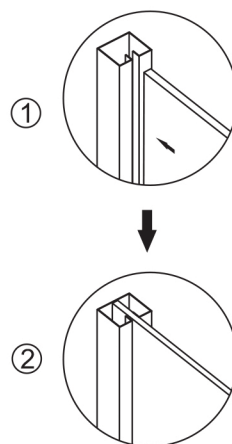
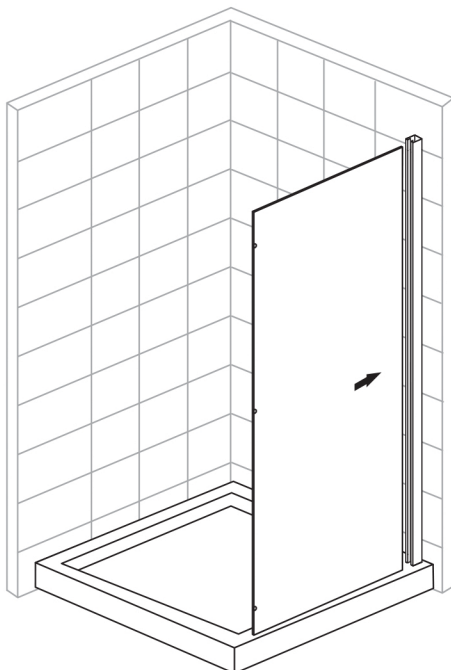
◆ Installation Steps

Step 1

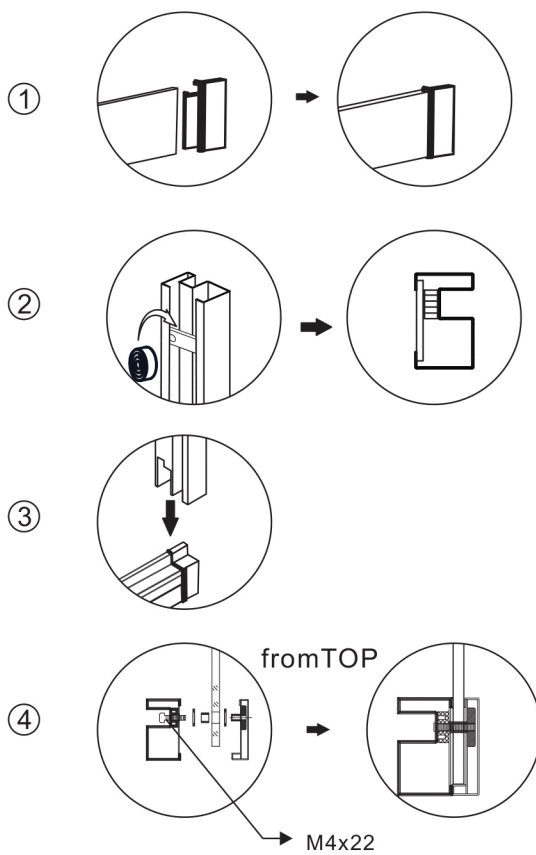
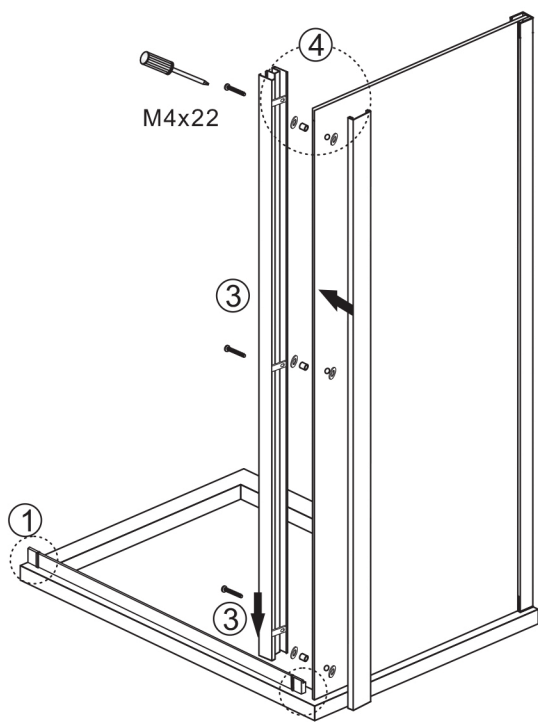


Screw ST4x35

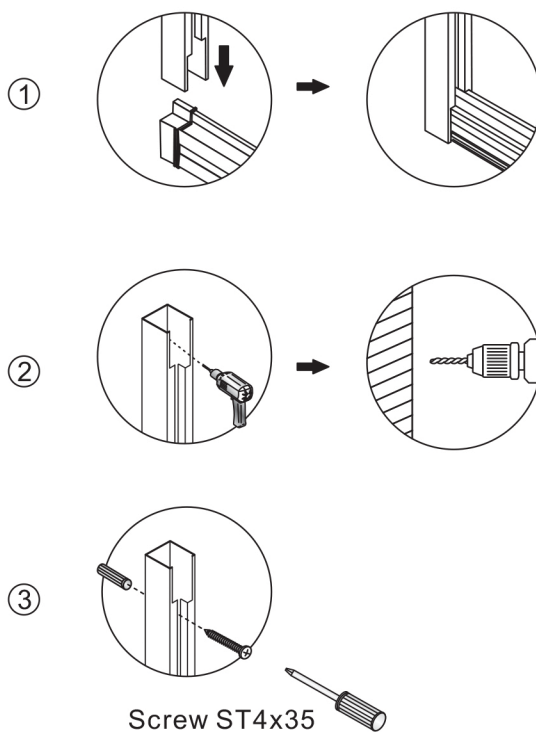
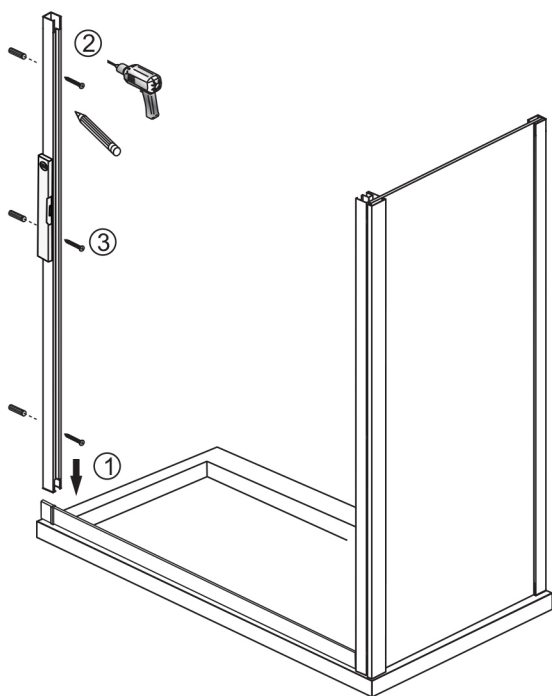
Step 2



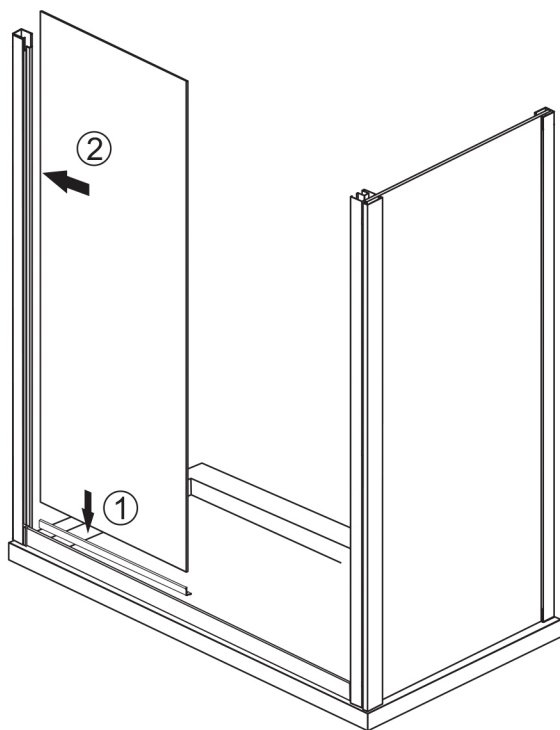
Step 3



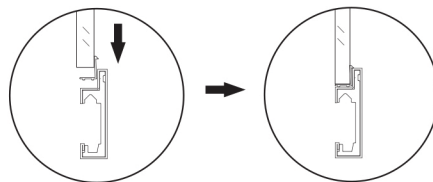
Step 4



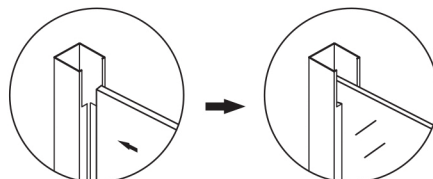
Step 5



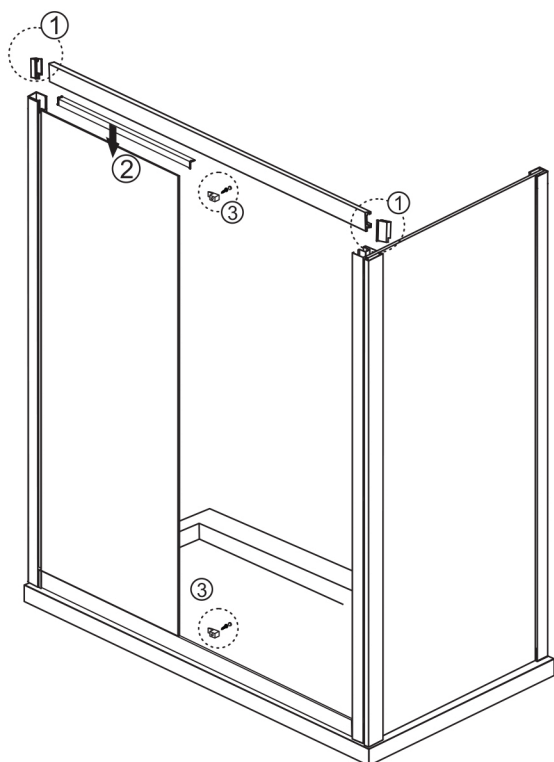
①



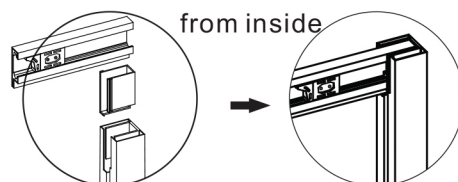
②



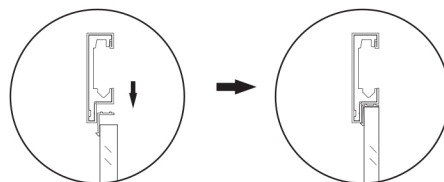
Step 6



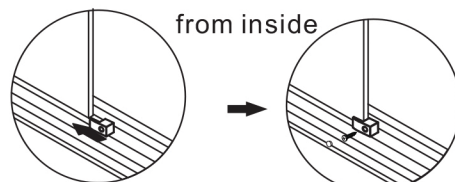
①



②

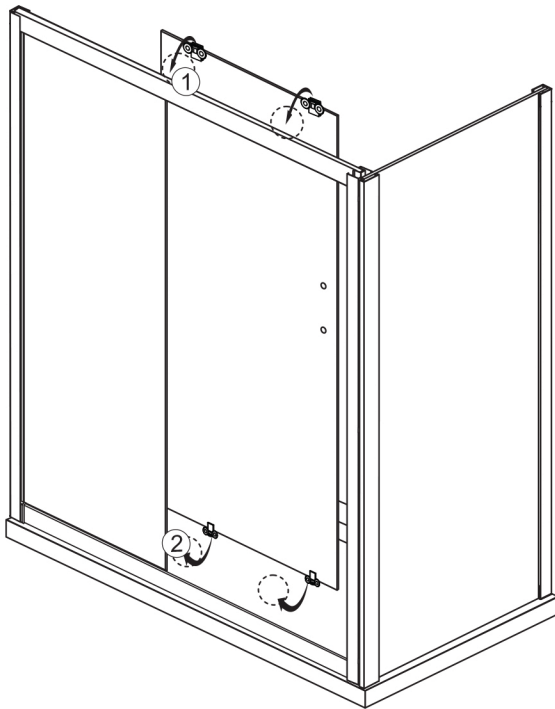


③

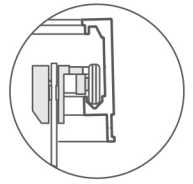
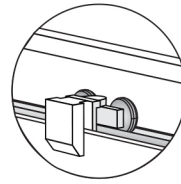


ST4X8

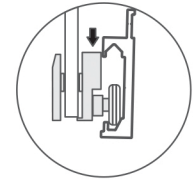
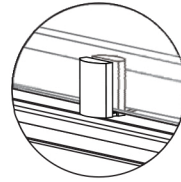
Step 7



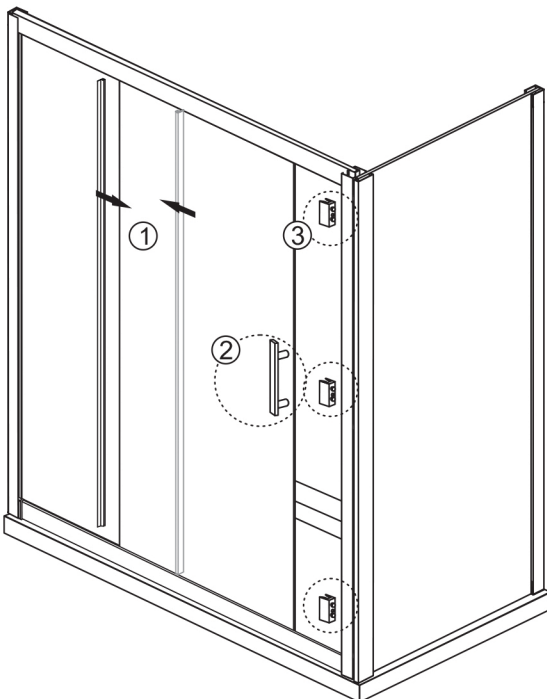
①



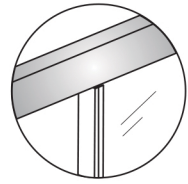
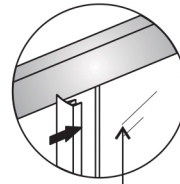
②



Step 8

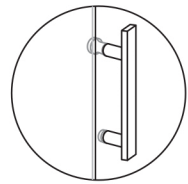
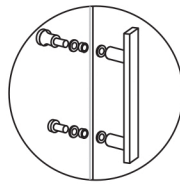


①

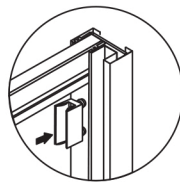


Door Panel

②

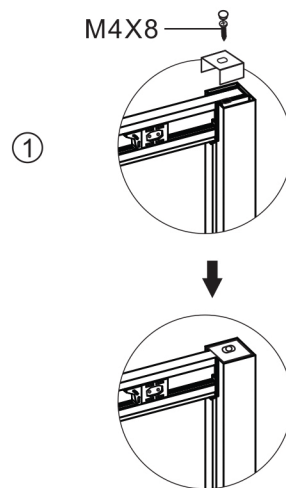
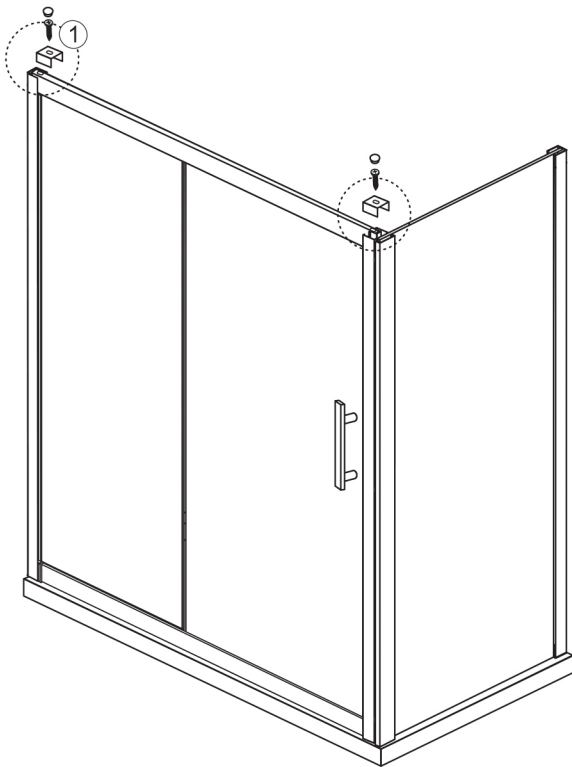


③

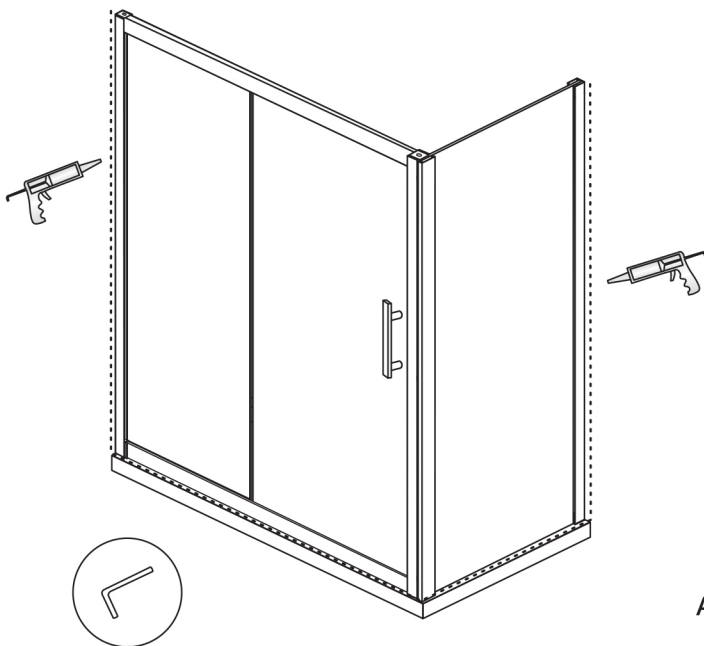


from inside

Step 9



Step 10



Allow 24 hours for silicone to dry before use.