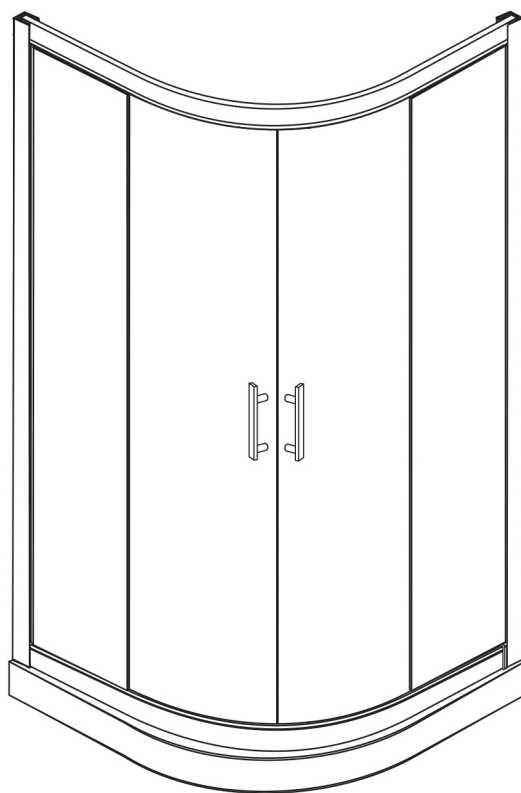


INSTALLATION INSTRUCTIONS

NPE2142



KARAG

INOX 200

◆ General Information

Please inspect the product immediately upon receipt for transit damage, missing packs/parts or manufacturing fault. Damage reported later cannot be accepted. Please handle the product with care avoiding knocks and shock loading to all sides and edges of the glass.

Notes: Safety glass can not be re-worked.

Please read these instructions carefully before start of installation.

Special care should be taken when drilling walls to avoid hidden pipes or electrical cables.

Note: This product is heavy and may require two people to install.

Aftercare instructions

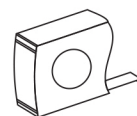
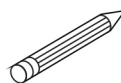
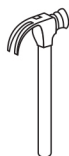
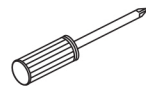
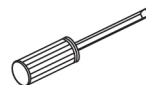
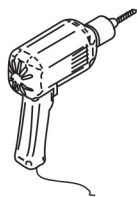
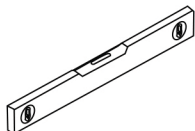
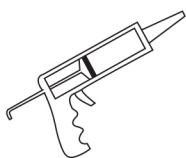
After use, your shower should be cleaned with soap and water. This is particularly important in hard water districts where insoluble lime salts may be deposited and allowed to build up.

Cleaners of a gritty or abrasive nature should not be used. Care should be taken to avoid contact with strong chemicals such as organic solvents and strippers.

Glass cleaners can be used but with caution, if in doubt contact the manufacturer of the cleaner in question.

Please keep these instructions for aftercare and customer service details.

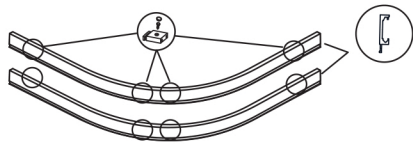
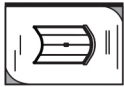

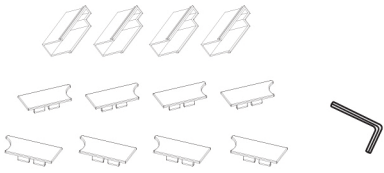
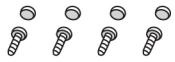

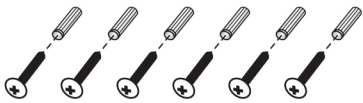
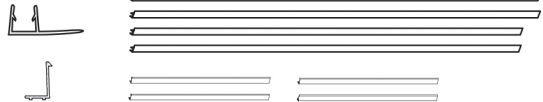


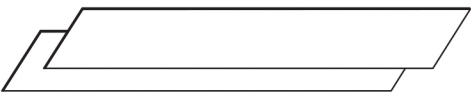
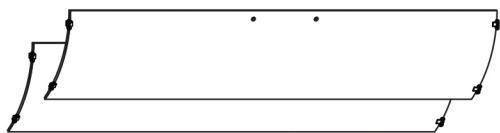
Tools Required



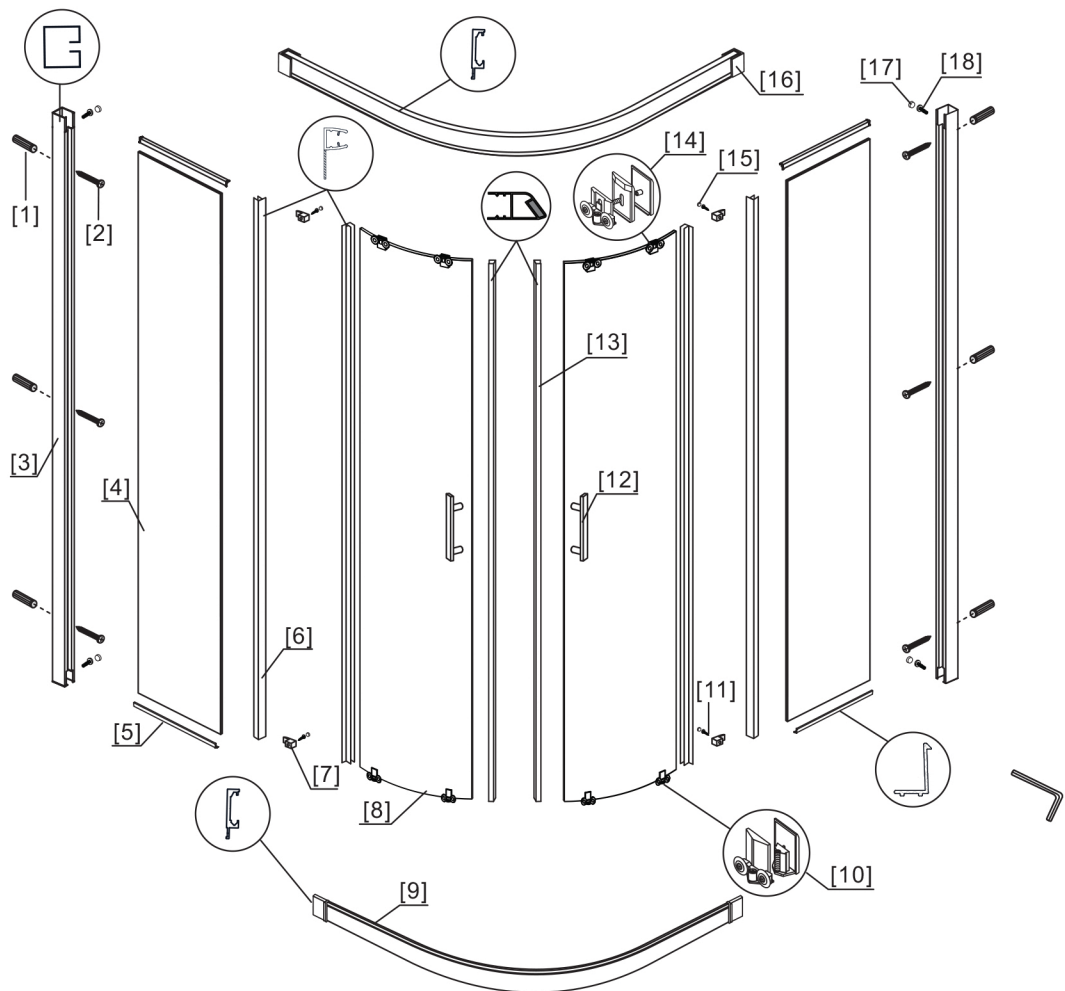
This product is heavy and may require two people to install.



◆ Box Contents:

<p>[1] 2xHorizontal Rails. 1xLube.</p>	→	
<p>[2] 1xInstallation Instruction.</p>	→	
<p>[3] 2xHandle Sets.</p>	→	
<p>[4] 4xProfile Covers. 4x Covers. 4x Covers. 1xSpanner.</p>	→	
<p>[5] 4xScrews M5x16. 4xScrew Cover Caps.</p>	→	
<p>[6] 4xBottom Hooks. 4xScrews M4x8 4xScrew Cover Caps.</p>	→	
<p>[7] 6xWall Plugs. 6xFlat Screws M4x35.</p>	→	
<p>[9] 4xWater Deflectors. 4xDeflectors.</p>	→	
<p>[10] 2xMagnetic Seals.</p>	→	
<p>[11] 2xWall Posts.</p>	→	
<p>[13] 2xFixed Panels.</p>	→	
<p>[14] 2xDoor Panels.</p>	→	

◆ Assembly Drawing

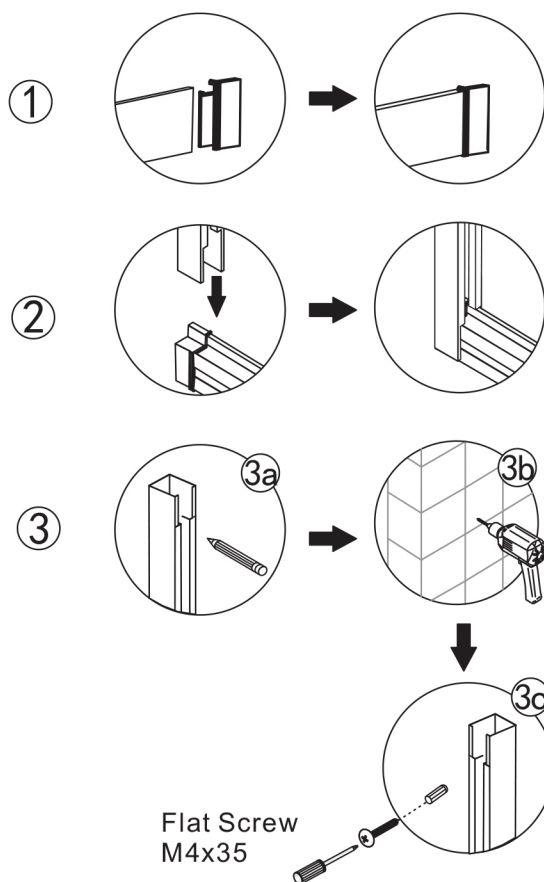
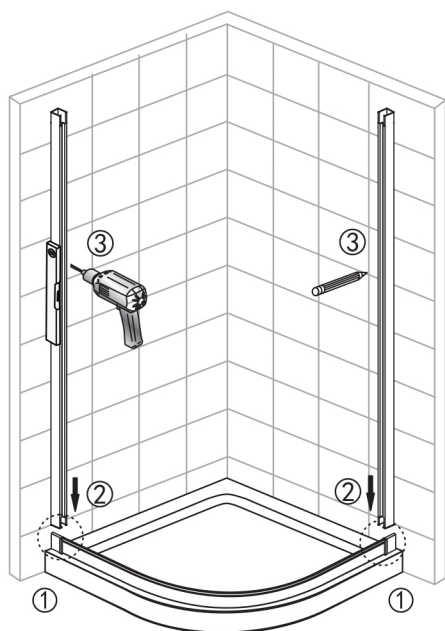


- [1] 6xWall Plugs
- [2] 6xFlat Screws M4x35
- [3] 2xWall Posts
- [4] 2xFixed Panels Wall Posts
- [5] 4xDeflectors
- [6] 4xWater Deflectors
- [7] 4xBottom Hooks
- [8] 2xDoor Panels 4xScrews M4x16
- [9] 2xHorizontal Rail

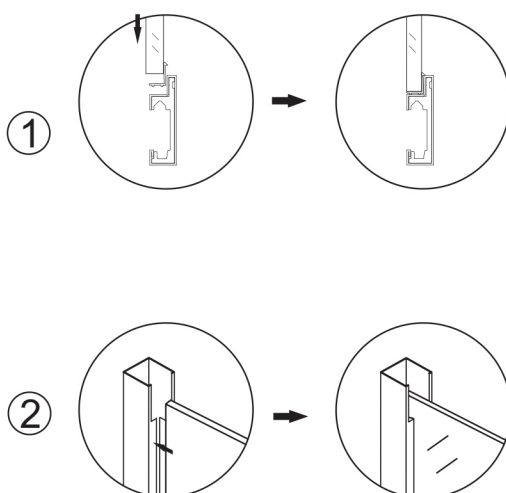
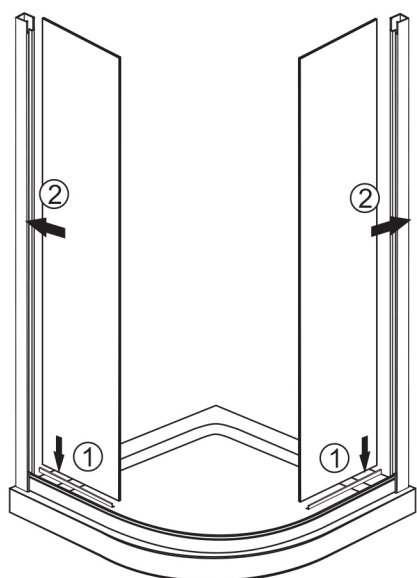
- [10] 4xUnder Rollers
- [11] 4xScrews M4x8
- [12] 2xHandle Sets
- [13] 2xMagnetic Seals
- [14] 4xTop Rollers
- [15] 4xScrew Cover Caps
- [16] 4xProfile Covers
- [17] 4xScrew Cover Caps
- [18] 4xScrews M5x16

◆ Installation Steps

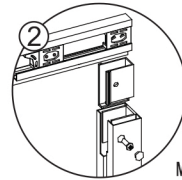
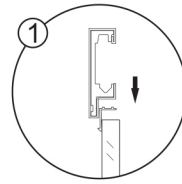
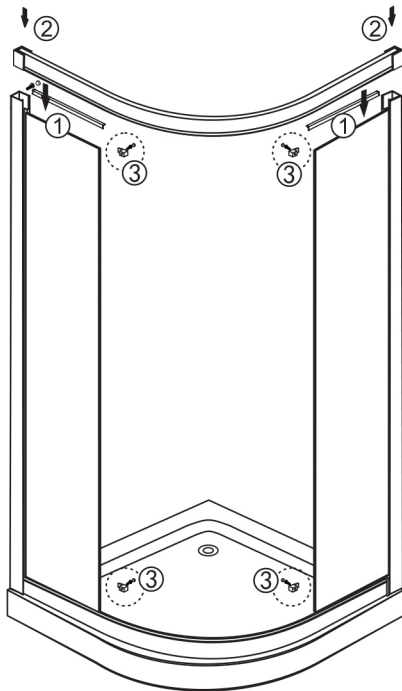
Step 1



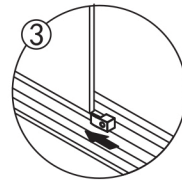
Step 2



Step 3

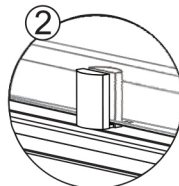
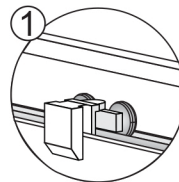
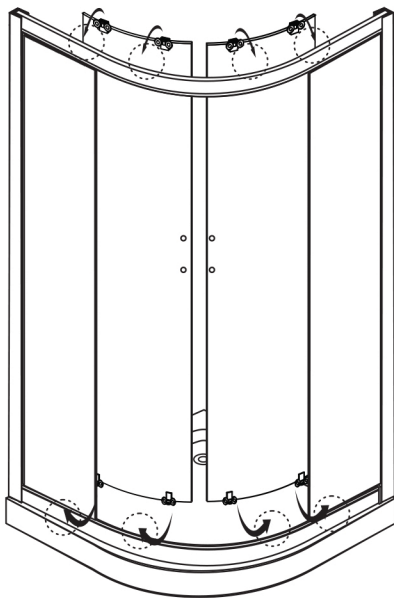


M5X16



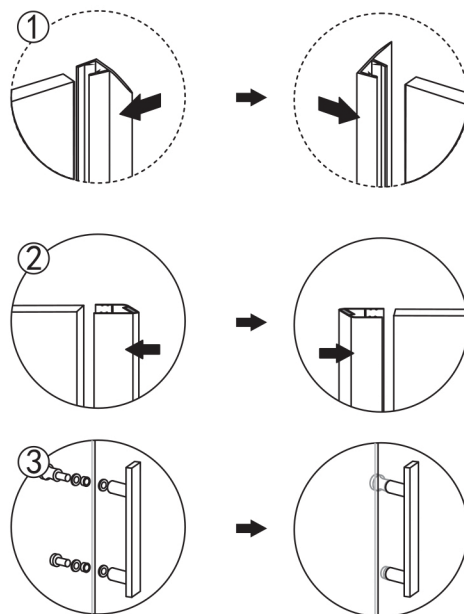
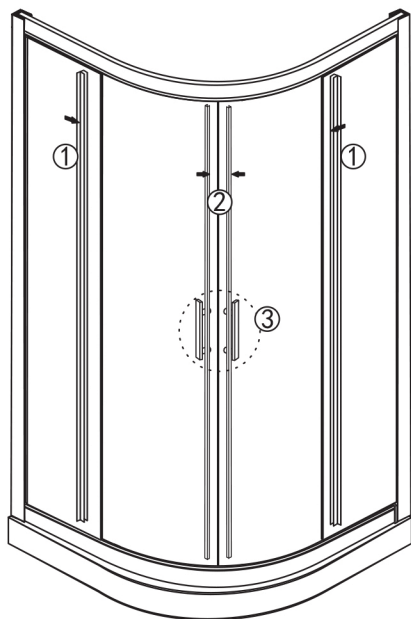
M4X8

Step 4

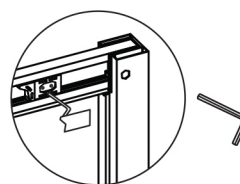
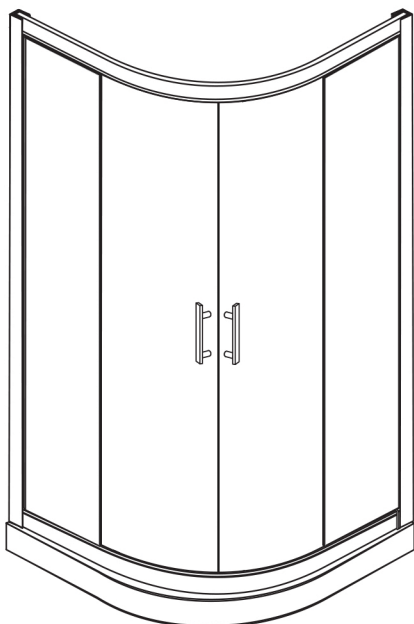


Adjust enclosure to hold top balane, make vertical posts upright, and keep the whole balanceable. The door should be push-and-pulled smoothly.

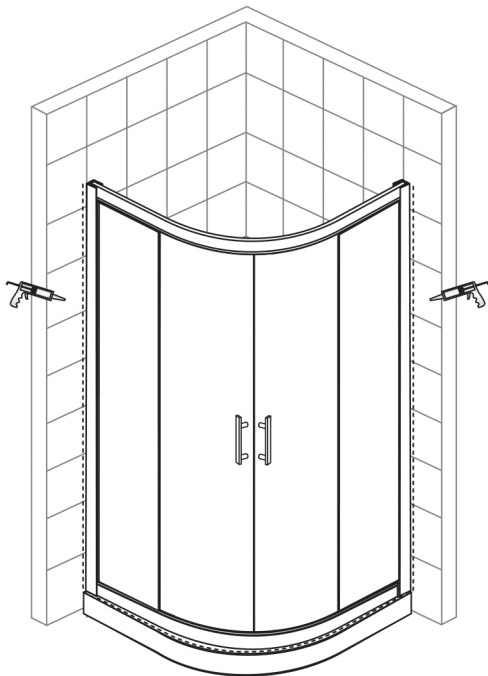
Step 5



Step 6



Step 7



Allow 24 hours for silicone to dry before use.