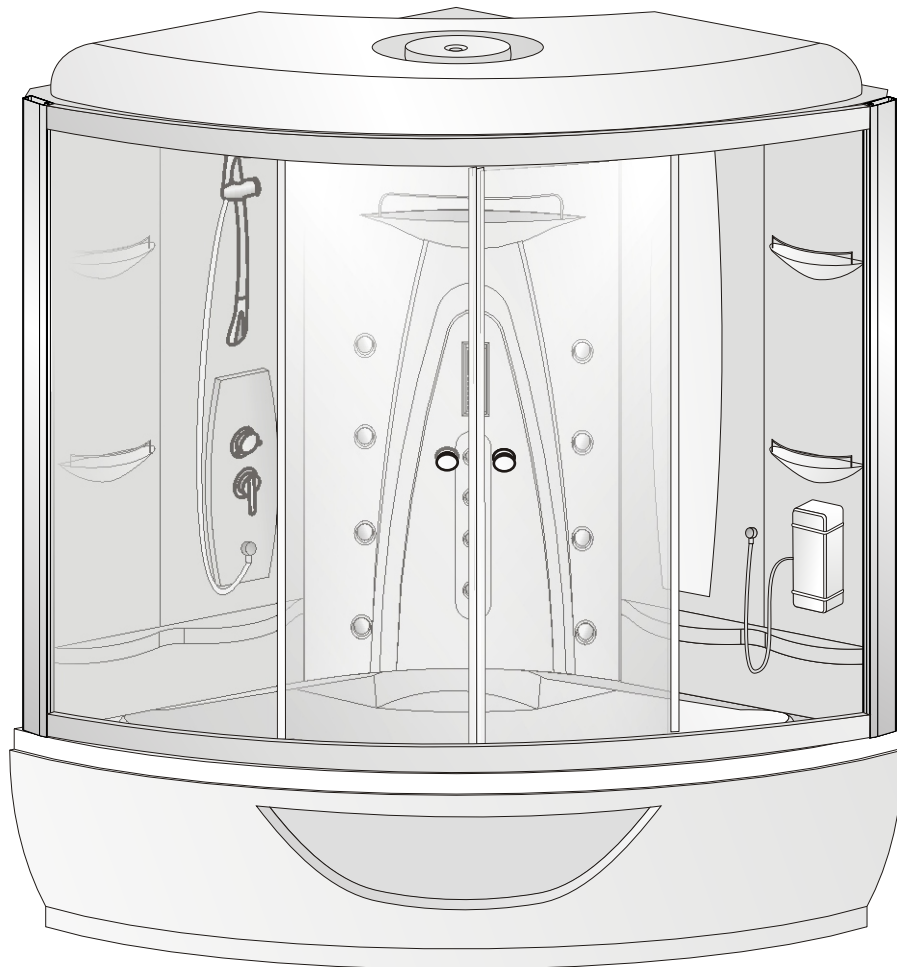


# KARAG

bathroom experience...

## ELENA K-524

*Usage & Installation Manual*



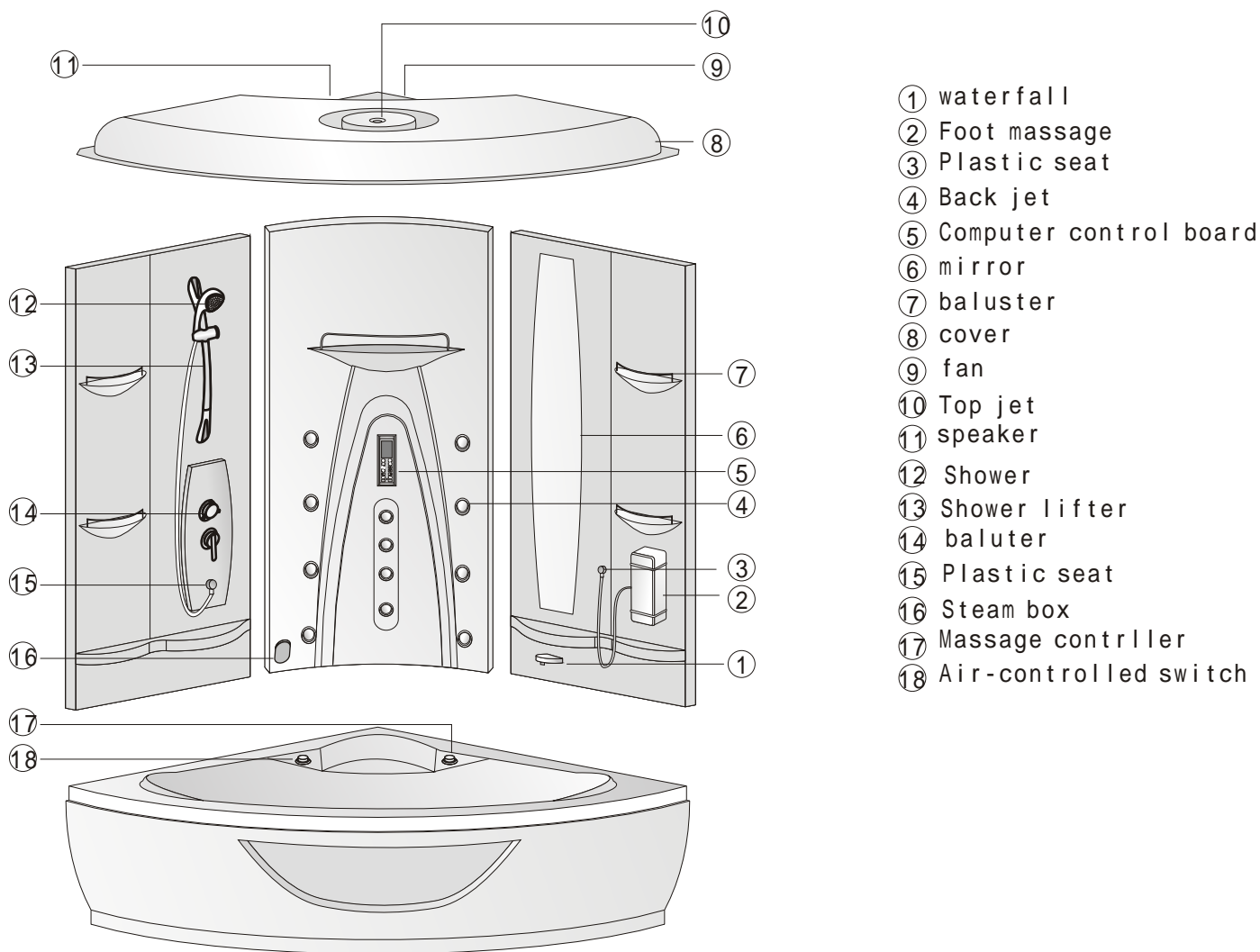
### **!** WARNING :

1. Cardiopathy , hypertension and person who is unwell or after drinking, please do not use the steaming room to avoid risk happening.
2. Children should be accompanied by the adult while using the steaming room .
3. Cut off all the power when there is no person using .

Please read the booklet carefully before installing and using.

**1、 Safety notice item:**

- The socket of electrical adaptor must be installed with earth leakage breaker and be used in the rules.
- The socket of electrical adaptor and switch must be collocated at where no slosh of water.
- The computerized shower-box must be installed by professionals.
- You need adjust the temperature of water befittingly to prevent attain the bathtub or scaled yourself when the tap is turned on.
- It is forbidden to be used by the people who have we had heart disease and madman and epileptic.
- It is forbidden to be used by the people who had over drunken or taken hypnotic medicines.
- Children should be accompanied by the adult while using the steaming room .
- If you will not use the steaming room for a long time, please cut off the scource and power of steaming room.



- ① waterfall
- ② Foot massage
- ③ Plastic seat
- ④ Back jet
- ⑤ Computer control board
- ⑥ mirror
- ⑦ baluster
- ⑧ cover
- ⑨ fan
- ⑩ Top jet
- ⑪ speaker
- ⑫ Shower
- ⑬ Shower lifter
- ⑭ baluter
- ⑮ Plastic seat
- ⑯ Steam box
- ⑰ Massage contrller
- ⑱ Air-controlled switch



Screw: M6 mechanism



Washers



M6 nut



screw: ST4.0X15



Screw: ST4.0X12

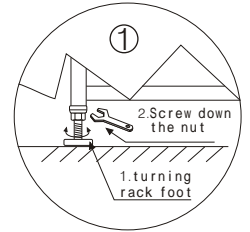
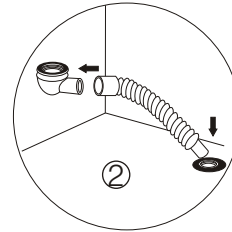
## Step 2. bottom tray installation

1. place the bottom tray in suitable position, adjust the screws on the adjusting rack foot to level the bottom tray and verify with level measure as illustration (1).

2. connect the drain and the preparative inlet with hose like illustration (2), this step can be regarded as the last step according to the user's real condition.

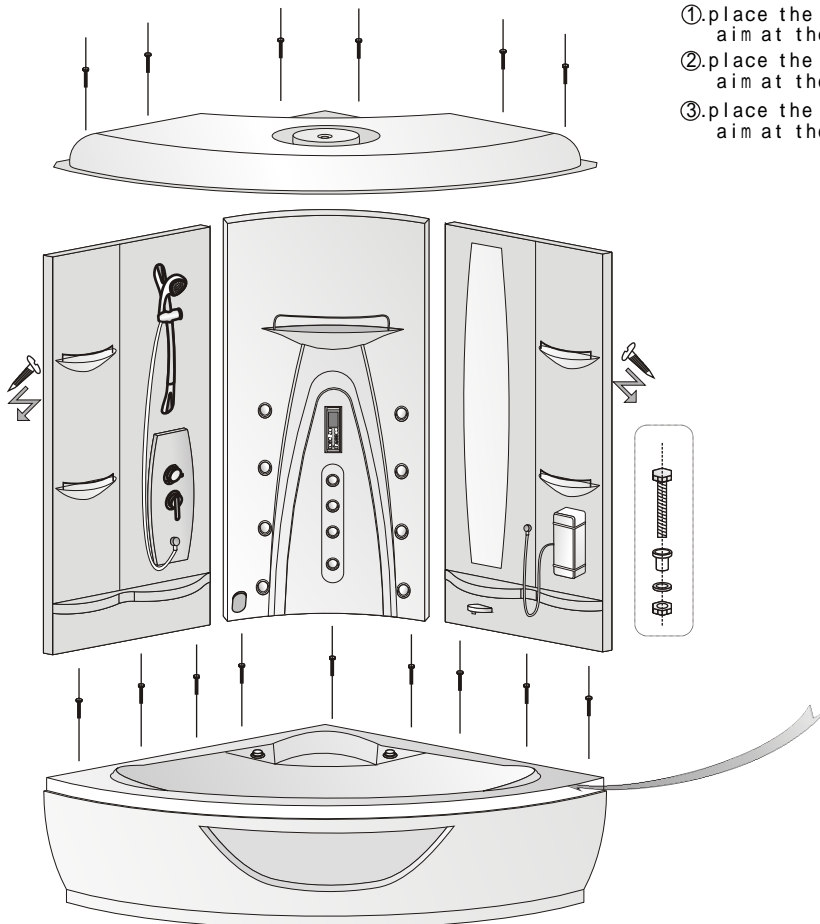
Preparative hole  
for hot or cool water inlet

Preparative hole for  
draining outlet



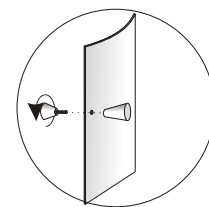
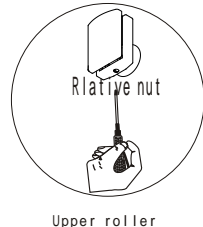
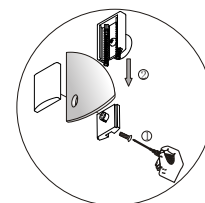
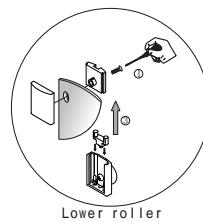
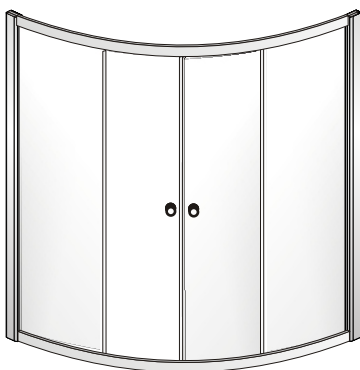
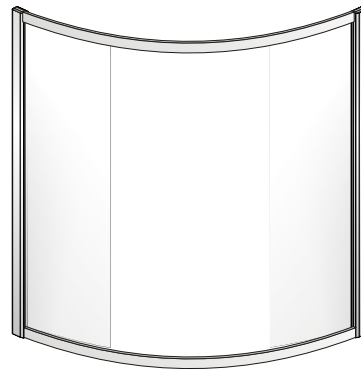
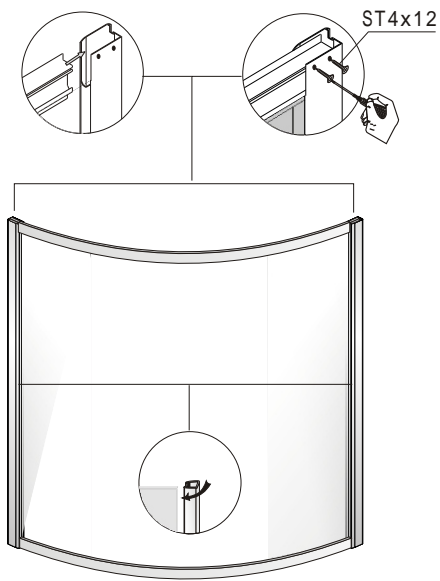
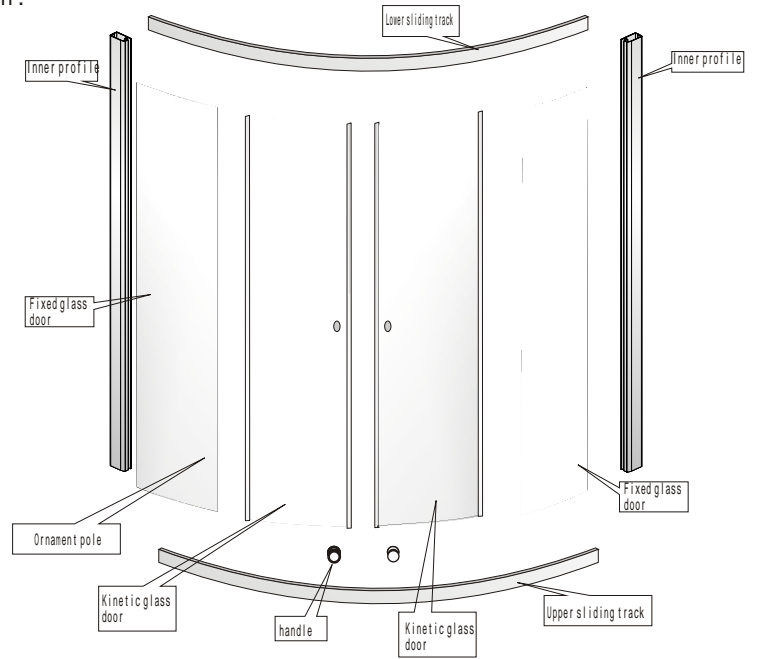
## Step 3. back panel installation

- ①. place the back panel upright in the back of bottom tray, and aim at the preparative hole of back panel and bottom tray.
- ②. place the glass door upright in the front of bottom tray, and aim at the preparative hole of glass door and back panel.
- ③. place the coping upright in the back of bottom tray, and aim at the preparative hole of back panel and bottom tray.

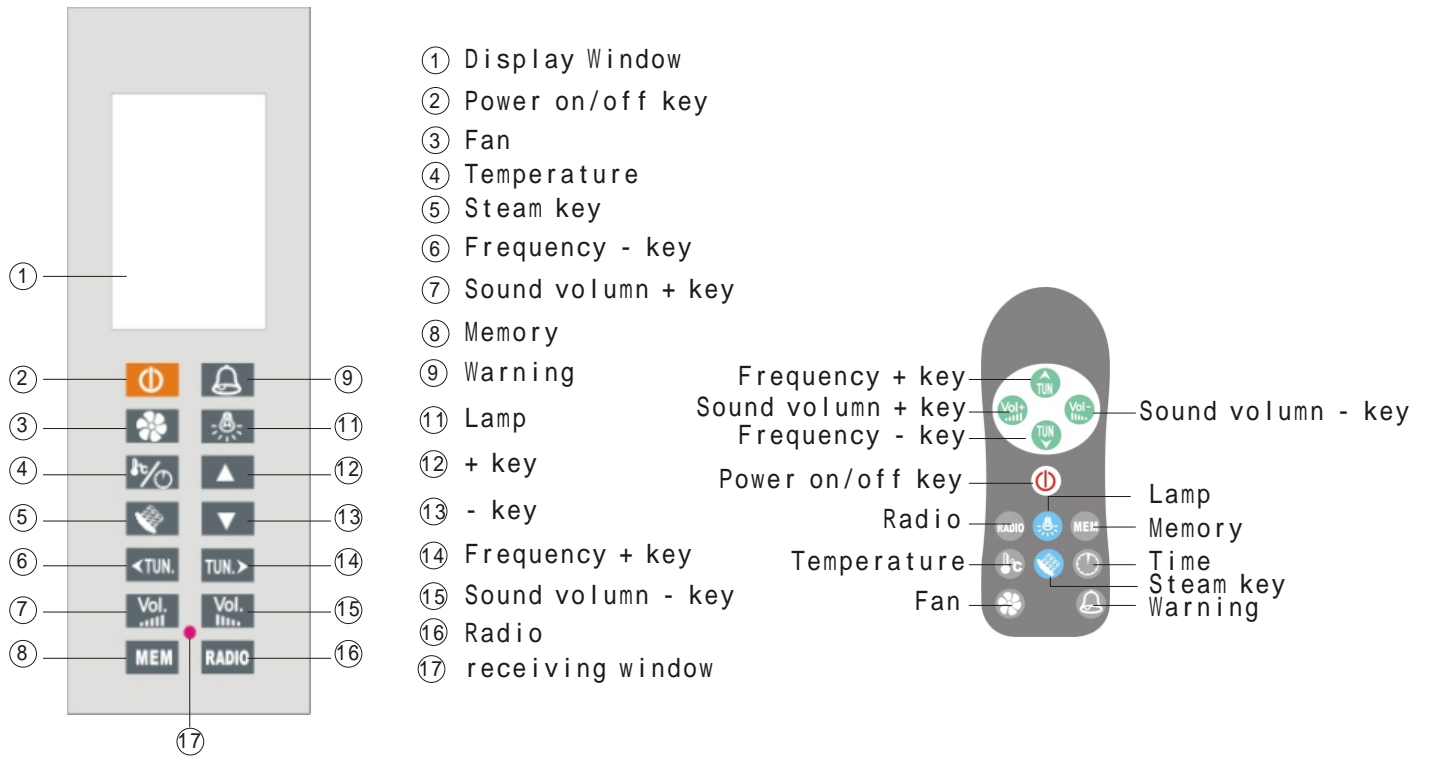


## Step 1. Glass door installation

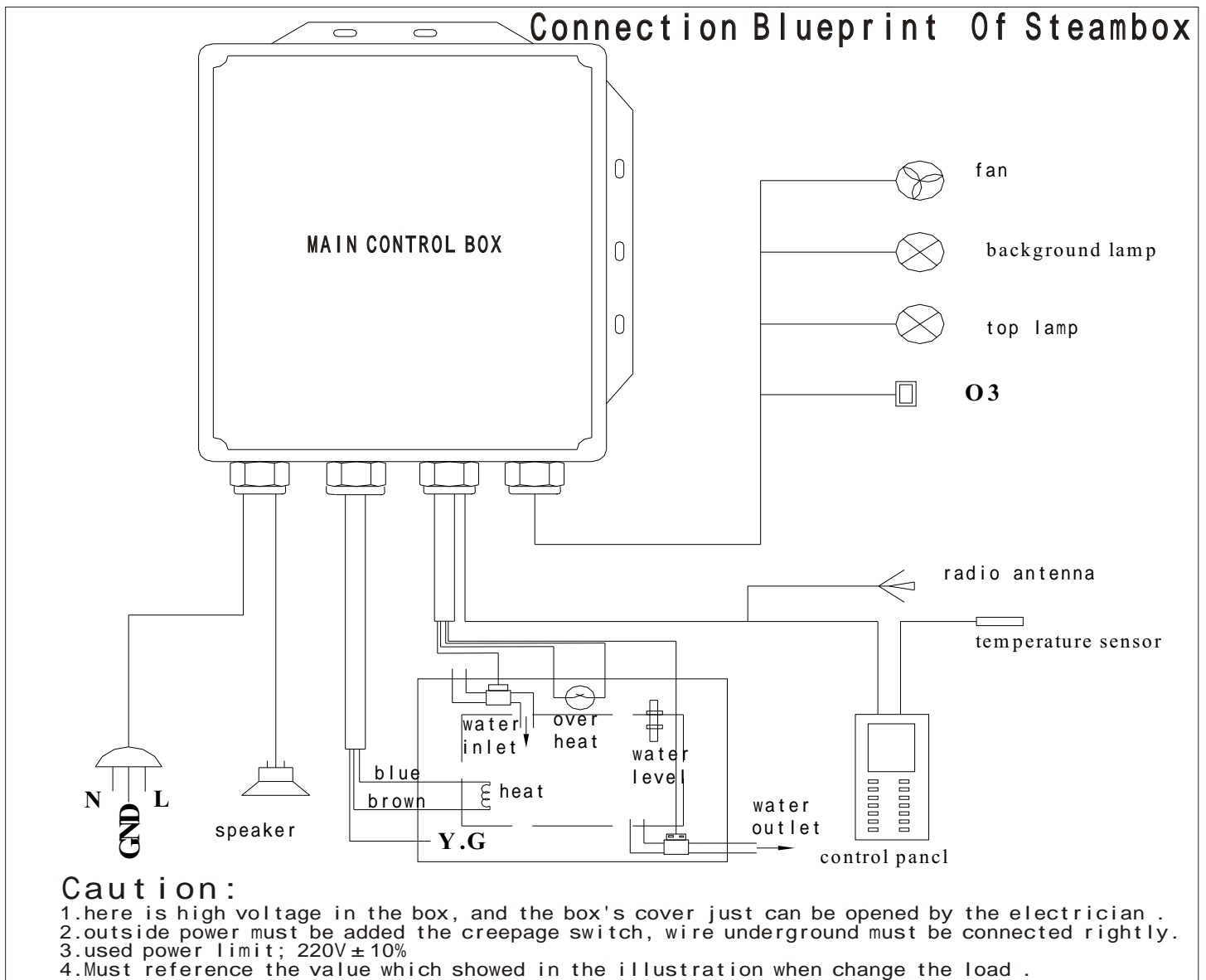
- 1.cover the pastern trip on one side of fixed glass, push the fixed glass into wall profile as illustration.
- 2.push the upper & lower roller channel into the wall profile as illustration, and use screw ST4.0X12 to connect and fix tightly.
- 3.cover the F pastern trip the edge of fixed glass as illustration, and fix the fixed glass on the upper & lower roller channel with plastic block.
- 4.assemble two upper idler pulley of the movable glass door and handles firstly like illustration.
- 5.hang two upper pulley of the movable glass on upper rolling channel and install two lower pulley.
- 6)Adjust the pulley with the screwdriver and w rench to make the sliding doors slide smoothly and ensure there is no any gap between two doors when the doors closed as the illustration.
- 7)As illustration(a) adjust the rollers to make the movable door slides smoothly with screwdriver, and ensure there is not any gap between two door when the door is closed.



# Computer console panel key-press instruction.



## Connection Blueprint Of Steambox



Function Explanaion of steam room micro-computered control for BS151  
BS151 is designed and developed especially for the house used micro-computered control system. This system can be briefly separated to two parts: steam and radio. The function of steam includes temperature and time adjusting, ventilator and light control and so on. The function of the Radio part are receiving the FM, electrical turning of the sound, figure control and self-searching programs. Besides, the BS151 has remote control and complete protecting function.

There are all together 14 keys in the display board, and there functions are as follows:

1.Power on/off Key

Turn on and off the power. After the system is connected with power, the background lamp, top jet, radio, massage are in use. The default setting for temperature is 40 , time is 30 minutes. The system will power off after every 60 minutes. (after 60 minutes, if the steam is on, when the setting time is off, the whole system will be off. )

2.Steam Key

Turn on/off the steam

3.Fan Key

Turn on/off the ventilator

4.Light Key

Turn on/off the top and background lamp

6. Alarming Key

Turn on the warning function, the fan, the top and background lamp, in the meanwhile , close the other functions, and then the buzzer sounds out.

6.+ Key& - Key

when the power is connected, the LCD will show the default setting temperature, and the + key /- key will increase/reduce the temperature: . the LCD will show the default setting time , the + key/- key increase/reduce the time. The setting scope for temperature is 20-50 , and setting scope for time is 1-50 minutes.

7. Temperature or time - key Set the temperature and time

8.Radio

Turn on/off the radio

9.Sound Volumn + Key &Sound Volumn Key

They are data controlled, press once a time, the sound will be louder/lower, if more than one second, the sound will become loud/low till it comes to the upper/lower limit. The setting scope for sound volumn is 0-80dB.

10. Tune + Key &13.Tune Key

They are data controlled, press once a time, the frequency will be increase/reduce, if more than one second, the frequency will be quick/slow automatically till there is a program or comes to 108.0MHz.

11. radio channel transfer key

Press it within one second, the channel will add one, (after 8 back to 1). and will tune the position of the channel. Press it more than one second, the channel will add one, (after 8 back to 1). and keep the present channel at the same time. BS151 remote control have 13 keys all together, . It don't have key, + key and temperature or time key but add a temperature key and time key.

Temperature key

When it is power on, press It will increase the temperature, when it comes to 50 , it will get back to 20 . The setting scope for temperature is 20-50 .

Time Key

When it is power on, press it will increase the time, when it comes to 50 minutes, it will get back to 20 minutes. The setting scope for temperature is 20-50 minutes.

## Explanation for using

### 1.Steam

Power on the system, press the on/off key. After open the steam, the system will inspect the water level automatically. If it is abnormal, the system will give a inject order to add the water. Then open the steam generator water inlet to let the water in. Under the condition of temperature processing, the temperature will fall 2 ,that is the temperature in the steam room is lower than the set one, and when the temperature in the steam room is lower than the set temperature, the steam generator will power off. And will turn on again when temperature in set is lower than it in the steam room.

### Radio System

BS151 has the function of data controlled transferring, which has electrical controlled sound volumn, automatic channel transferring, and channel displaying.

### Failure

BS151 has a huge function of protecting and self examining, which can give you a comfortable and safe environment for shower.

## Reasons of Failure are as follows:

### 1.Code 1 "E1"

BS151 adhibits double CPU(different CPU control the display and main control part seperately).At the normal condition, the main and side control will cooperate with each other most of the time. When there are 15 minutes that the communication between them is cut or broken, the system will show E1 ,and cut all the outside load to protect the system. And it will come to work as the communication smooth again.

## Reasons for the failure:

communication failure

- A.communication line is broken or cut.
- b.Communication driver circuit failure
- c.CPU I/O broken.

### 2.Code "E3" over time inlet water

When the steam is power on, if the water box is inspected lack of water, the system will open the water inlet valve to add water, if the water level is still abnormal, the system will show "E3", then the steam is power off.

## Reason for Failure:

- a.the close of the main water valve
- b.no water supply in the residence
- c.water inlet valve system failure
- d.useless water level inspect

### 3.Code "E5": overheated protecting

When the steam is power on, the system will continually inspect the heat controlling key, if the heat released tube are on fire as it is too heat, the system will show "E5",and then the steam will power off.

## Reason for Failure:

- a.uncontrolling steam system
- b.broken of the heater tube
- c.CPU failure

## Basic Tecnology index:

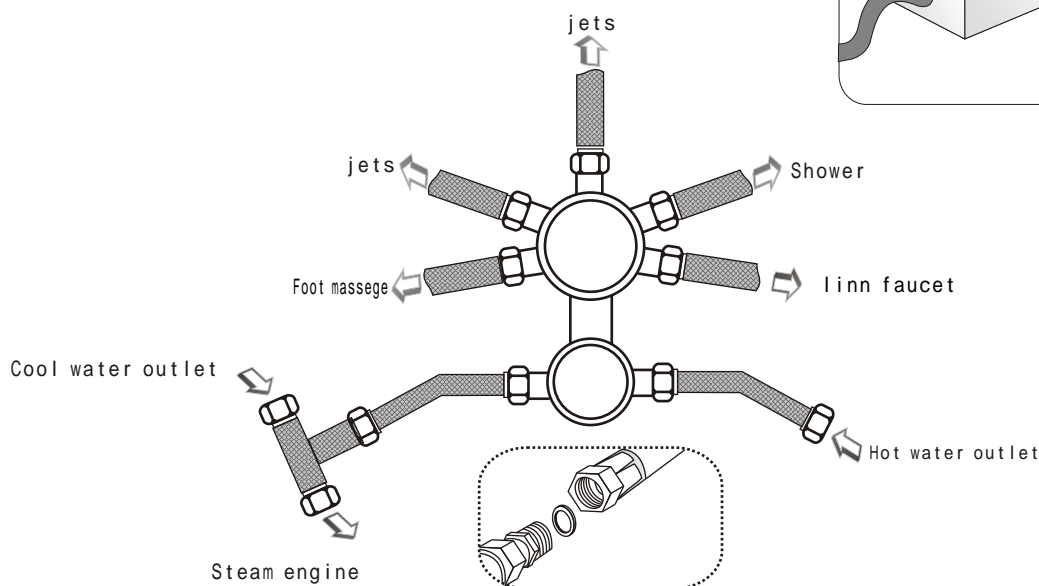
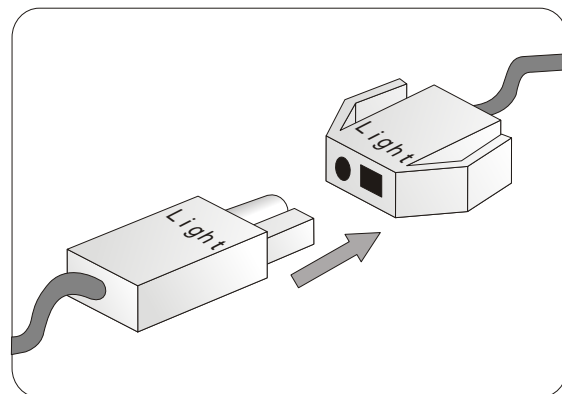
- 1.electricity scope of transformer:AC187V-256V/50Hz
- 2.temperature setting scope:20-60
- 3.time setting scope:1-50 minutes
- 4.temperature inspect allowance: more or less than 2
- 5.creepage sense time: less than 100mS
- 6.creepage sensity: less than 30mA
- 7.radio transferring channel scope:87.5-108.0MHz
- 8.radio transferring sensity:<15uV/m

## outside connected circuit data requirement:

- 1.steam generator: specified work electricity :AC220/50HZ, power less than 3KW,probe water level sensor, ever-closed heat protection switch(generate heat and cut)
- 2.electromagnetic valve horn:DC12V/5W
- 3.exhaust fan: DC12V/3W
- 4.Top lamp: AC12V/16W
- 5.background lamp: AC12V/16W
- 6.Louder:8 /10W

## CIRCUIT CONNECTING ILLUSTRATION

1. connect the circuit according to the label on the connector like the illustration.



Notice: all the connector of hose must be adde the sealed pastern gasket

## currently fault obviating

Fault	Possible reason	Ways of obviating
Can not turn on	1.the creepage protector haven't been connected with the power. the controlling wire between the controller and the electrical box haven't been connected correctly	1.check if the light of creepage protector is off. if is, then connect the power again. 2.connect the computer controlling wire correctly anew.
Computer console panel operating glitch	1.outside plug haven't been inserted correctly. 2.circuit fault	1.insert the outside plug correctly anew. 2.connect with the dealer, have the careerman servicing.
Reception of a radio in weak result	1.radio antenna haven't been drawn out. 2.radio station frequency haven't been adjusted correctly. 3.user is locating a weak signal area.	1.draw out the antennal and place correctly. 2.adjust the station frequency anew. 3.affect by geographic location.
Loudspeaker no voice	1.Sound volume adjusted too down. 2.the connecting plug of loudspeaker loosened. 3.the loudspeaker is broken.	1.turn up sound volume. 2.connect the plug correctly. 3.change the loudspeaker.
Telecontrol operating glitch	1. batteries capacity is too low.	Change batteries
Creepage protector switch short circuit during using	1.creepage switch was affected by damp steam engine creepage.	1.dry with a blower. 2.change steam engine.
Ozone can not give off	1.ozeone connector loosened. 2.ozone giving machine was broken.	1.connect the connecting wire correctly. change the ozone giving machine.

The products can not be used causing by the problem of circuit or the user can not solve by himself, please contact the local dealer and servicing by the careerman. Please do not change the products circuit connecting presumely, otherwise you would have to share all the result .