

EN FR IT DE GR

KARAG

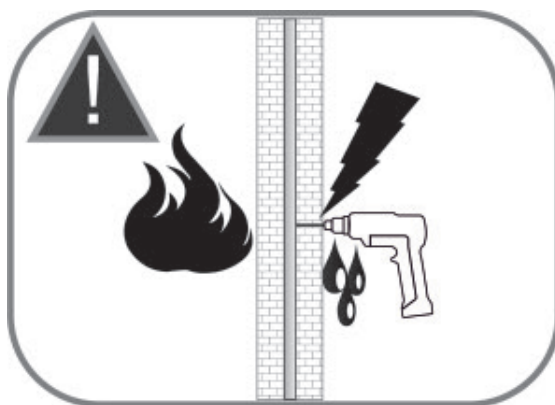
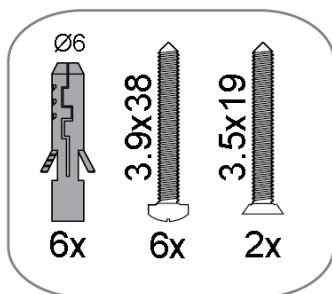
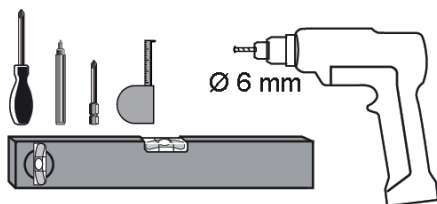
bathroom experience...

www.karag.it

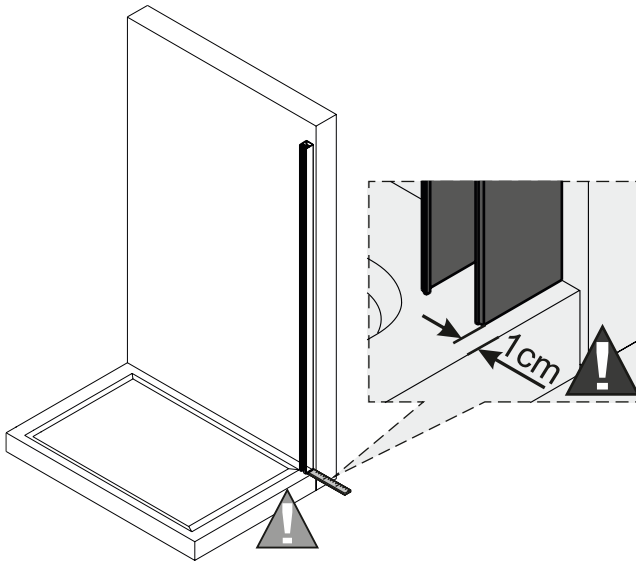
WALKIN 4

INSTALLATION MANUAL

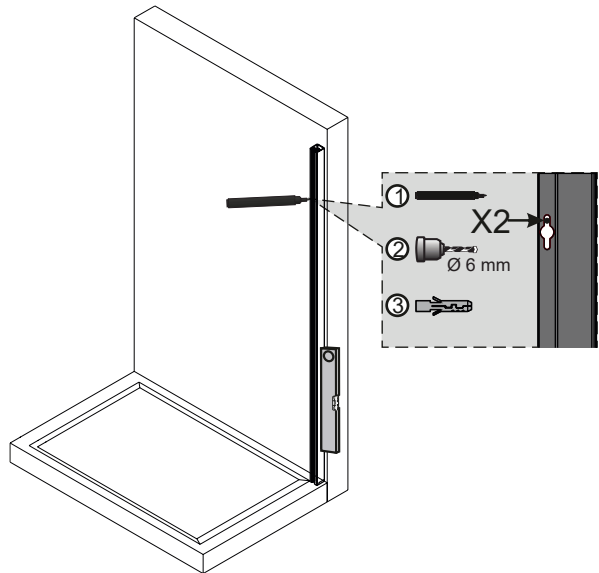
Tools needed



1.

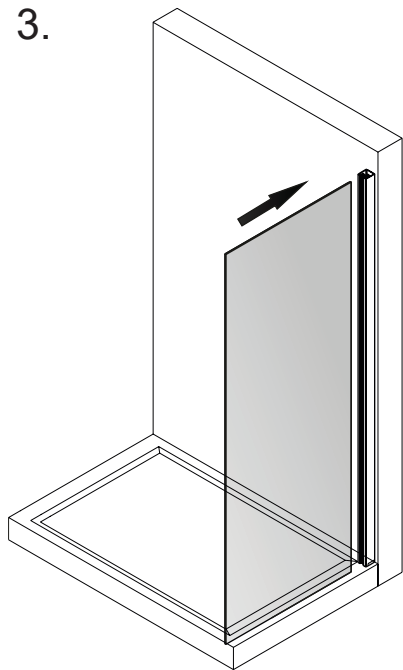


2.



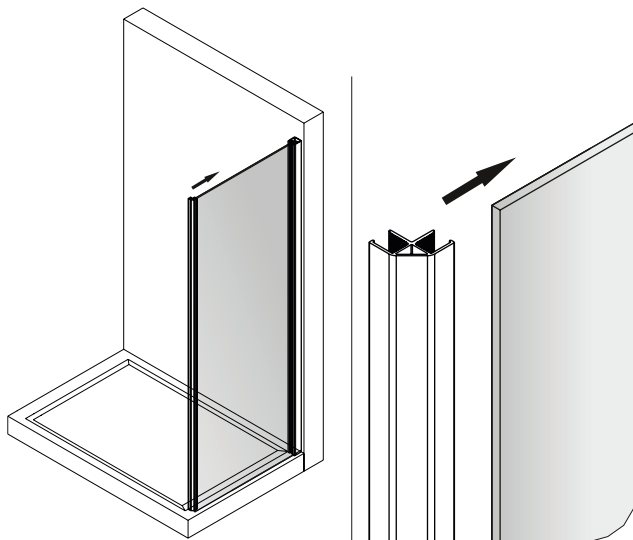
- ▶ Level and screw the vertical wall profile.
- ▶ Nivelier et serrer le profilé mur vertical.
- ▶ Livellare ed avvitare il profilo muro verticale.
- ▶ Richten sie das Wandprofil aus und schreiben sie es fest.
- ▶ Αλφαδιάστε και βιδώστε το κάθετο προφίλ τοίχου.

3.



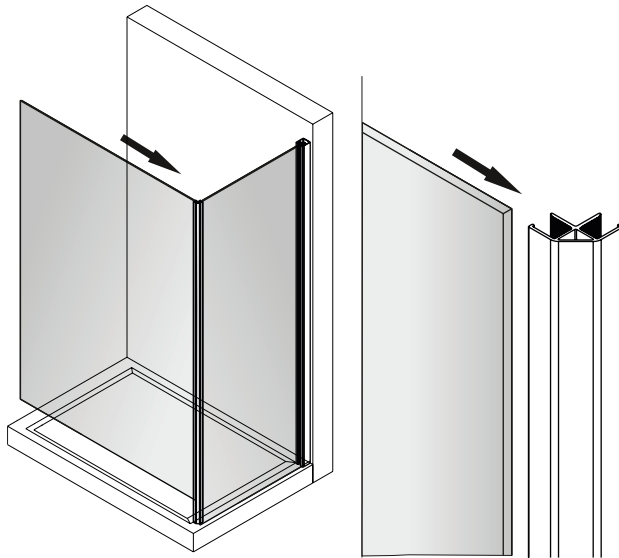
- ▶ Place the fixed glass in the wall profile.
- ▶ Placer le panneau fixe dans le profilé mur.
- ▶ Posizionare il vetro fisso nel profilo muro.
- ▶ Setzen sie das Glas in das Wandprofil.
- ▶ Τοποθετήστε το σταθερό κρύσταλλο μέσα στο προφίλ τοίχου.

4.

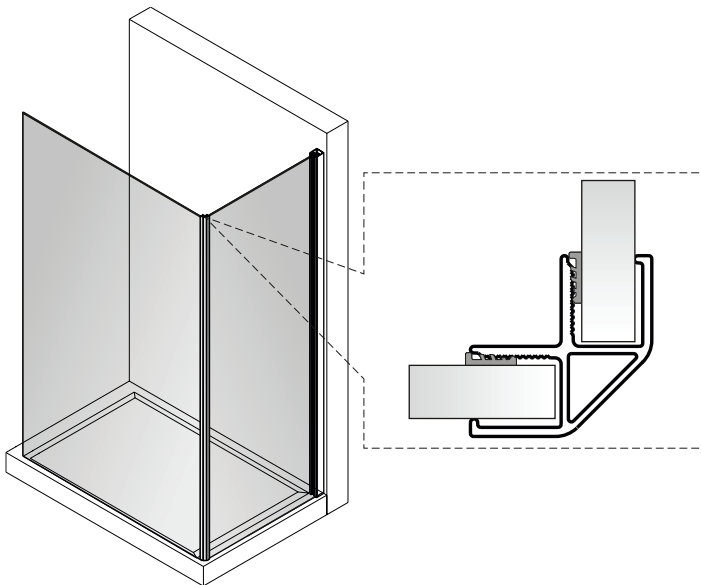


- ▶ Insert the sealing profile by pressing it.
- ▶ Placer appuyant sur le profilé d'étanchéité.
- ▶ Posizionare premendo il profilo di tenuta.
- ▶ Legen Sie das Dichtungsprofil ein durch Drücken.
- ▶ Τοποθετήστε πιέζοντας το προφίλ στεγανοποίησης.

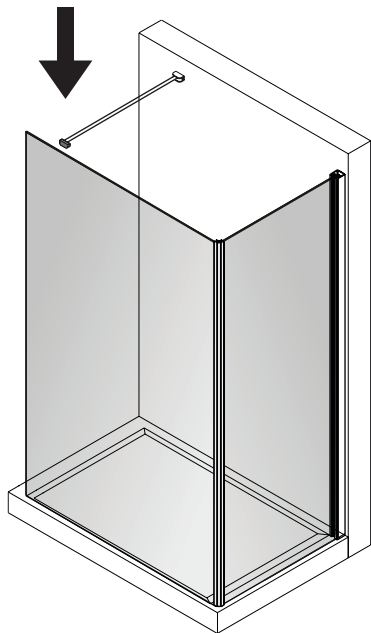
5.



- ▶ Gently place the fixed glass in the duct.
- ▶ Placer doucement le verre fixe dans la cavité speciale.
- ▶ Posizionare delicatamente il pannello fisso nell' incavo.
- ▶ Setzen Sie Vorsichtig das feste Glas in die dafür vorgesehene Leitung.
- ▶ Τοποθετήστε με προσοχή το σταθερό κρύσταλλο στην ειδική εσοχή.

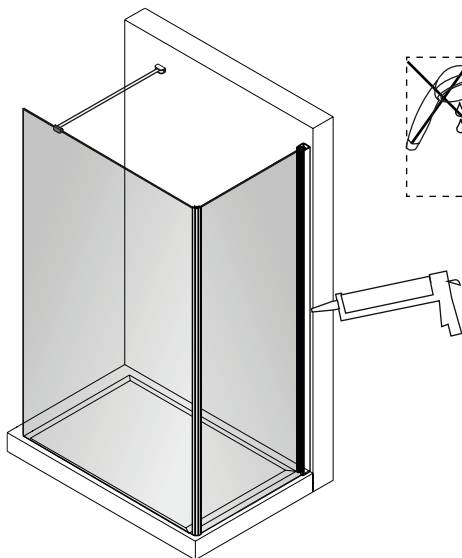


6.



- ▶ Place the bracket.
- ▶ Placer le support.
- ▶ Posizionare la staffa.
- ▶ Platzieren Sie die Halterung.
- ▶ Τοποθετήστε την αντηρίδα.

7.



- ▶ Apply silicone around.
- ▶ Appliquer autour de la silicone.
- ▶ Applicare silicone attorno.
- ▶ Silikon einsetzen.
- ▶ Εφαρμόστε σιλικόνη περιμετρικά.

